



CABINET SPECIFICATION GUIDE

WWW.MAPLEHAUSUSA.COM





CONTENTS

Frameless Cabinet Construction.	2 - 3
Cabinet Reveals & Dimensions	4
Door Styles.	5
Finishes And Materials.	5 - 13
Wall Cabinets.	14 - 15
Base Cabinets	16 - 18
Tall Cabinets	19
Oven Cabinets	20
Accessories	21-22
Customer Care	23



General Construction

Cabinets are european style frameless design with full access and full overlay styling. All panels and rail components are joined with engineered based connections appropriate to the typical use of the cabinet.

All frameless cabinet boxes are made from commercial grade furniture board with laminated, water resistant, scratch resistant (not waterproof) surfaces.

Soft Close Hinge

Standard doors feature 3-way adjustable, Soft Close clip-on concealed hinges with 110° opening (except where noted).



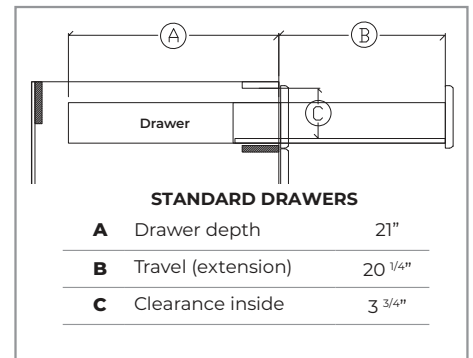
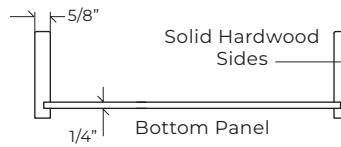
Shelves

Standard cabinet shelves are full-depth, 3/4" adjustable shelves with solid machined metal clips. Shelves in cabinets 36" or wider also include a center shelf pin.



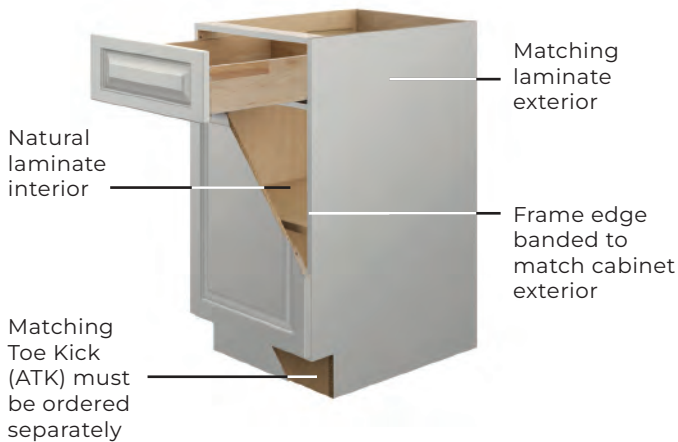
Drawer Construction

All drawers feature a metal sides drawer box construction. Standard drawers and large drawers 24" wide or under feature under-mount Soft Close glides. Large drawers 30" or wider feature heavy-duty side-mount Soft Close drawer slides.

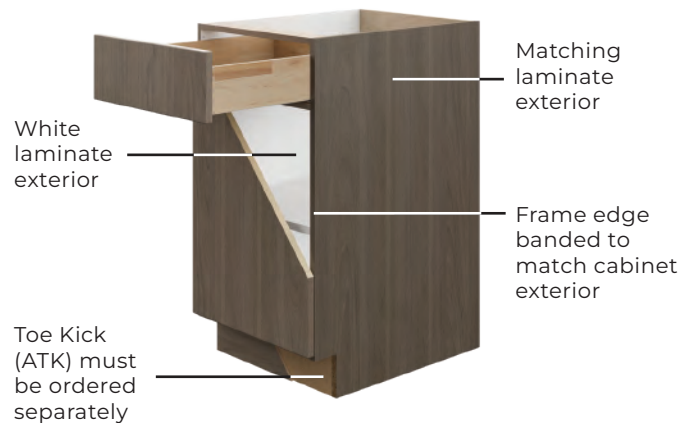


Finish Details

Particle Board with Plywood Styles



TF and MDF Styles





WALL CONSTRUCTION



- A** 3/4" top panel*
- B** 1/4" back panel* into end panels with concealed 4" mounting rails.
- C** Self locking shelf clips
- D** Full overlay door with 3-way adjustable, Soft Close clip-on hinges
- E** 3/4" bottom panel*
- F** White or Natural Laminate interiors (based on finish, see Finish Details section on page 6)
- G** 3/4" side panels
- H** 3/4" full-depth adjustable shelves*
- I** Center shelf pin on cabinets 36" and wider

BASE CONSTRUCTION



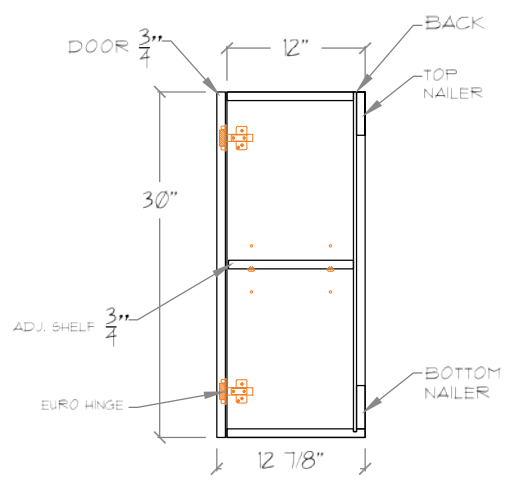
- J** 3/4" plywood rail doweled and glued into end panels
- K** Full overlay slab or five piece drawer front (based on door style, see page 5)
- L** 3/4" full-depth adjustable shelves
- M** Full overlay door with 3-way adjustable, Soft Close clip-on hinges
- N** Bottom rail and toe kick matching
- O** 3/4" Bottom panel
- P** 3/4" Side panels
- Q** Metal sides drawer with under-mount Soft Close glides
- R** 1/4" laminated furniture board back panel with 4" high x 3/4" thick plywood mounting rails

*Top, bottom, back and shelves of any cabinet that features a matching interior are constructed from 3/4" material

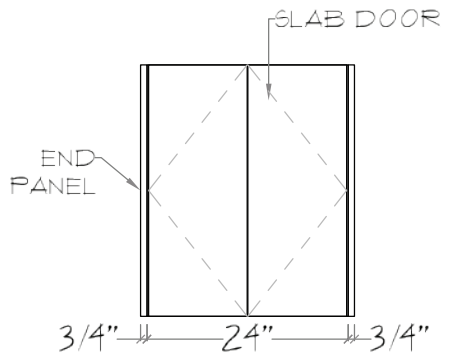


WALL CABINETS

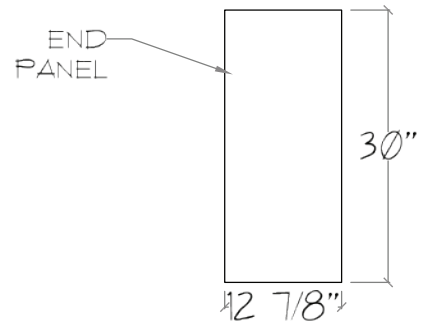
SECTION VIEW



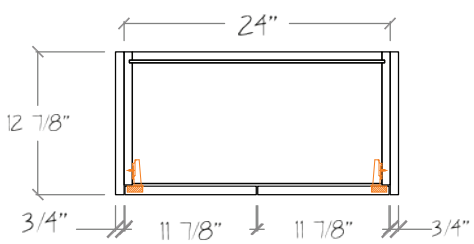
FRONT VIEW



SIDE VIEW

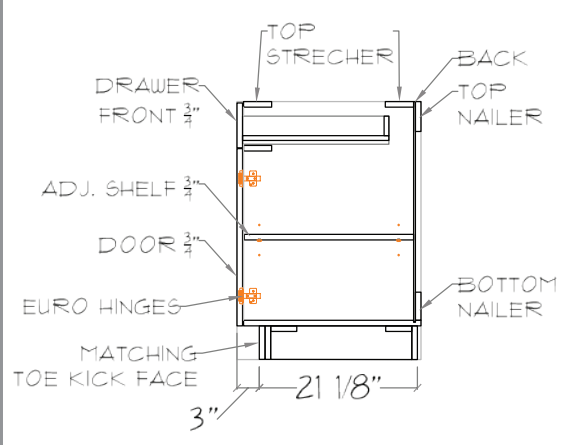


TOP VIEW

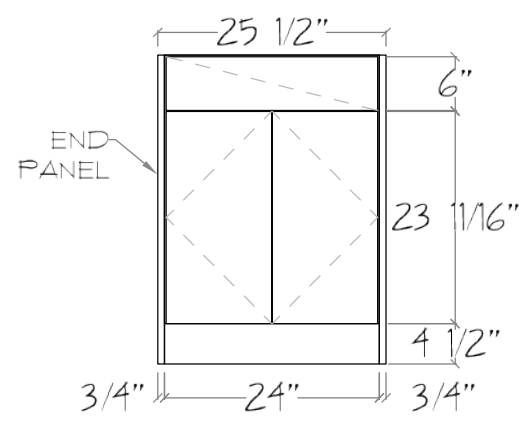


BASE / VANITY CABINETS

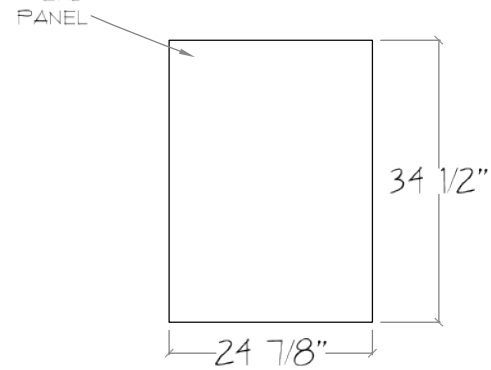
SECTION VIEW



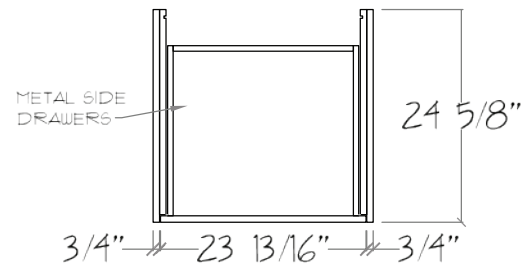
FRONT VIEW



SIDE VIEW

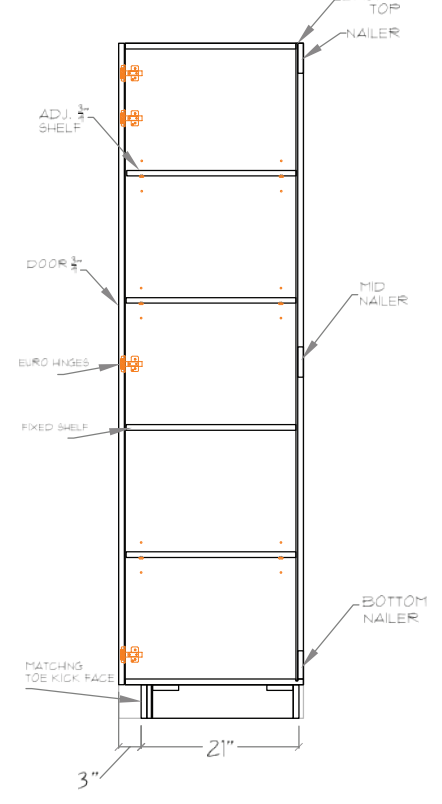


TOP VIEW

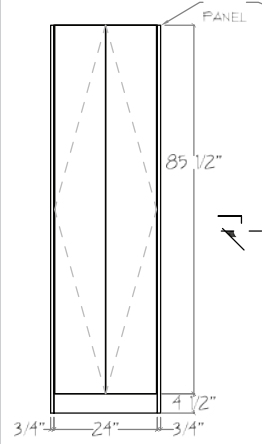


TALL CABINETS

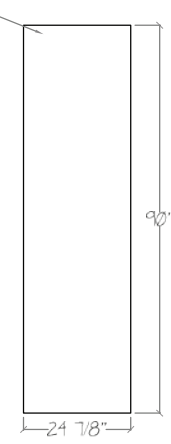
SECTION VIEW



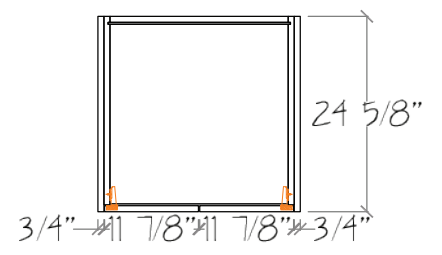
FRONT VIEW



SIDE VIEW



TOP VIEW





DOOR STYLES



SLAB



SHAKER



THIN-SHAKER

Wilsonart[®] SELECTIONS

WILSONART WOODGRAINS™



WINDSOR MAHOGANY



FIGURED MAHOGANY



WILD CHERRY



MONTANA WALNUT



EMPIRE MAHOGANY



NEPAL TEAK



BANNISTER OAK

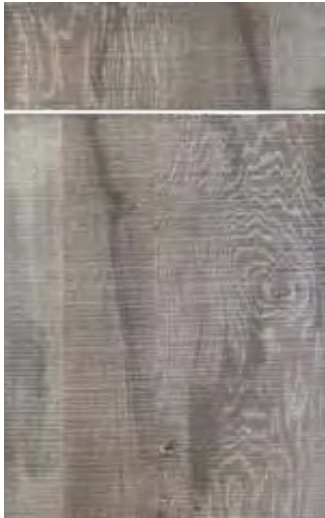


SOLAR OAK

**Complete finish library available upon request.*



ABSTRACTS



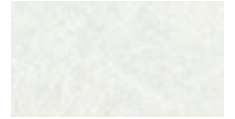
ALMOND LEATHER



GREY GLACE



NEUTRAL GLACE



GREY PAMPAS



WHITE NEBULA



GREY NEBULA



GRAPHITE NEBULA



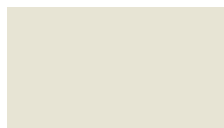
CLOUD NEBULA

**Complete finish library available upon request.*

SOLIDS



FASHION GREY



CRYSTAL



NATURAL ALMOND



KHAKI BROWN



NORTH SEA



SLATE GREY



DOVE GREY



SHADOW

**Complete finish library available upon request.*



RESIDENTIAL



PORTORO



CALACATTA ORO



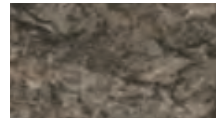
LECHE VESTA



MERCURY VESTA



ANDORRA SHADOW



TOFFEE DI PESCO



PEARL SEQUOIA



WHITE CASCADE

**Complete finish library available upon request.*

DARK & MOODY LUXE

Turn down the color. Turn up the drama. Convey a deep sense of luxury with dramatic contrasts that make a statement.

Saturated colors like blacks, brown-blacks, and deep blues and greens pair with exotic wood accents to create spaces that offer a sense of retreat and tranquility.





WILSONART® HD® LAMINATE



ASHBEE OAK



RUSKIN OAK



FISHER OAK



STICKLEY OAK



MORRIS OAK



MERCER OAK



WEBB OAK



SUMNER OAK

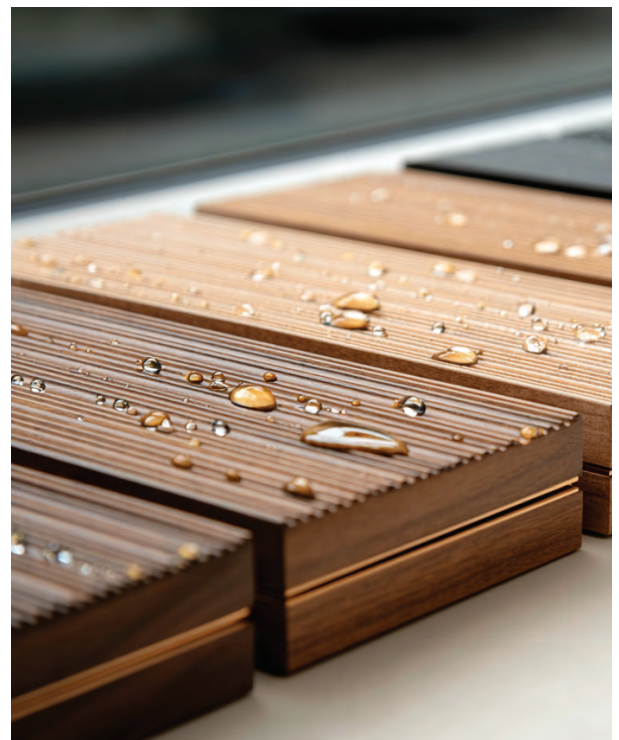
**Complete finish library available upon request.*

ENDURING PERFORMANCE

This high-performance laminate is engineered for demanding residential and commercial interiors. Designed to withstand daily wear, it offers enhanced resistance to scratches, scuffs, and impact while maintaining a consistent, refined finish.

Advanced surface technology helps inhibit the growth of bacteria, mold, and mildew, supporting cleaner, more resilient environments. Its low-maintenance composition makes it an ideal solution for countertops, tabletops, cabinetry, millwork panels, and other high-traffic applications.

Built for longevity. Designed for performance.





STANDARD WALNUT & OAK



SILK PRIMAVERA OAK



STRAW PRIMAVERA OAK



UMBER PRIMAVERA OAK



COCOA PRIMAVERA OAK



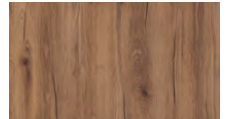
GOLD HUDSON OAK



BISCOTTI HUDSON OAK



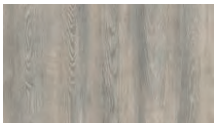
CASHMERE HUDSON OAK



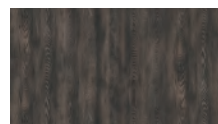
AMARETTO HUDSON OAK



CHOCOLATE HUDSON OAK



STONE ARVADONNA CHESTNUT



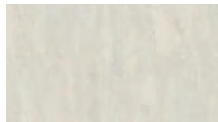
MINK ARVADONNA CHESTNUT



FLAMED ARVADONNA CHESTNUT



CHARCOAL ARVADONNA CHESTNUT



SILK FLOW



PURE SURFSIDE ASH



LIGHT ARTWOOD



LIGHT ROCKFORD HICKORY

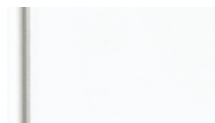


SAND BARBERA OAK

PLYWOOD



SMOKED KALA



SNOW WHITE



HABANNA



PURE SURFSIDE



ROBLE ETERNITY



TOBACCO FRANKLIN



WENGUE



SILVER LIBERTY



MDF

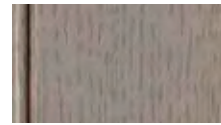
VENEER FINISH



AQUALINA



PURE WHITE



CASHMERE



FARMHOUSE



STRAIGHT NOCE



SHADOW ELM



MOD ELM



CHARRED OAK

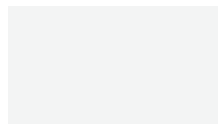
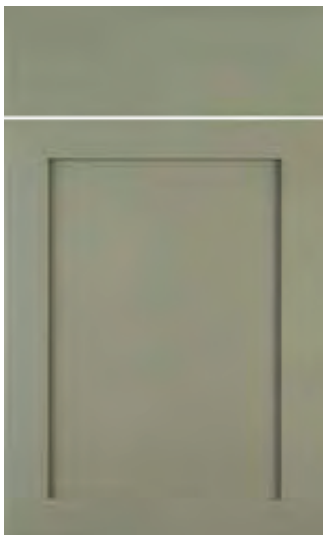


DARK WALNUT



BLEACHED WALNUT

FLAT MATTE



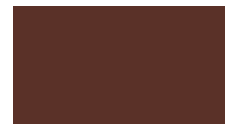
PURE WHITE



DOVE GREY



NORTH SEA



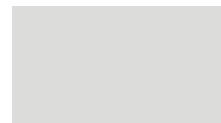
SEDONA



EVERGREEN MIST



MIRAGE



INSIPID



DUNE



EVERGREEN MIST



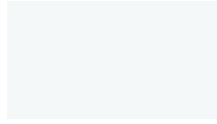
MIRAGE



INSIPID



MIRROR GLOSS



PURE WHITE



DOVE GREY



NORTH SEA



SEDONA

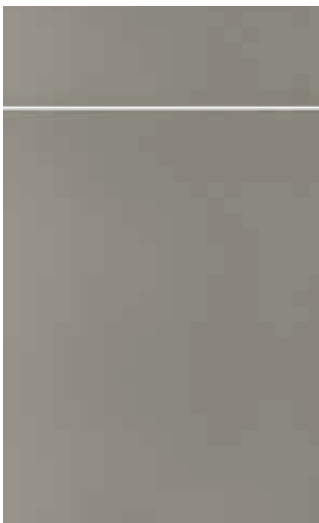


ANTHRACITE

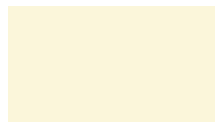


BLACK

ULTRA MATTE



SNOW WHITE



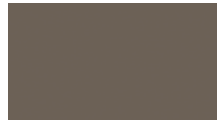
ALMOND



SATIN



CASHMERE



LATTÉ



STONE GREY



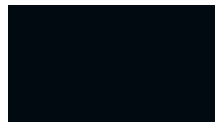
SLATE GREY



COBALT GREY



ANTHRACITE



BLACK



DUSK BLUE



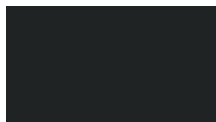
SMOKE GREEN



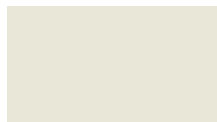
ALBY BLUE



CERAMIC RED



BASALT



DUSK BLUE



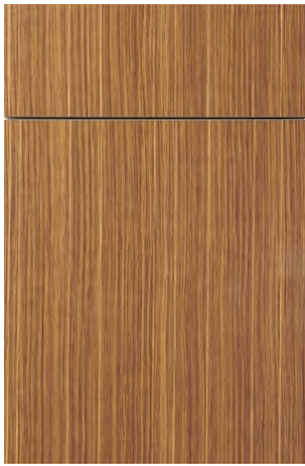
SMOKE GREEN



ALBY BLUE



PAINT FINISHES



SLAB



SHAKER



THIN-SHAKER

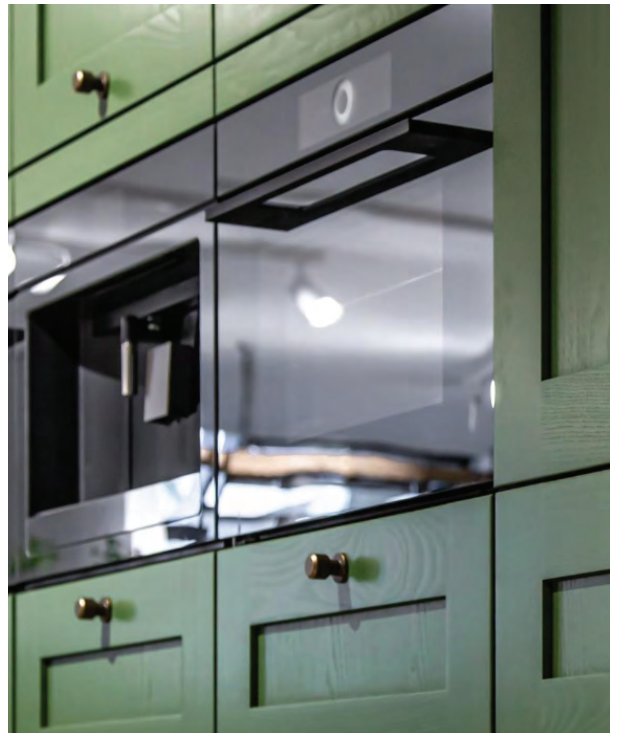


Benjamin Moore
Paints



**SHERWIN
WILLIAMS**

**Complete paint finish library available upon request.*





Single Door Wall Cabinet 12" Deep (W)



W	H	D	CODE
9	30	13	W930-1DO
12	30	13	W1230-1DO
15	30	13	W1530-1DO
18	30	13	W1830-1DO
21	30	13	W2130-1DO
9	36	13	W936-1DO
12	36	13	W1236-1DO
15	36	13	W1536-1DO
18	36	13	W1836-1DO
21	36	13	W2136-1DO
9	42	13	W942-1DO
12	42	13	W1242-1DO
15	42	13	W1542-1DO
18	42	13	W1842-1DO
21	42	13	W2142-1DO

Double Door Wall Cabinet 12" Deep (W)



W	H	D	CODE
24	30	13	W2430-2DO
27	30	13	W2730-2DO
30	30	13	W3030-2DO
33	30	13	W3330-2DO
36	30	13	W3630-2DO
24	36	13	W2436-2DO
27	36	13	W2736-2DO
30	36	13	W3036-2DO
33	36	13	W3336-2DO
36	36	13	W3636-2DO
24	42	13	W2442-2DO
27	42	13	W2742-2DO
30	42	13	W3042-2DO
33	42	13	W3342-2DO
36	42	13	W3642-2DO

Wall Bridge Cabinet 13" Deep (W)



W	H	D	CODE
30	12	13	MW3012-2DO
33	12	13	FW3312-2DO
36	12	13	FW3612-2DO
30	18	13	MW3018-2DO
33	18	13	FW3318-2DO
36	18	13	FW3618-2DO
30	24	13	MW3024-2DO
33	24	13	FW3324-2DO
36	24	13	FW3624-2DO



Wall Bridge Cabinet 24" Deep (W)



W	H	D	CODE
30	12	24	MW301224-2DO
33	12	24	FW331224-2DO
36	12	24	FW361224-2DO
30	18	24	MW301824-2DO
33	18	24	FW331824-2DO
36	18	24	FW361824-2DO
30	24	24	MW302424-2DO
33	24	24	FW332424-2DO
36	24	24	FW362424-2DO

Wall Lift Up Cabinet (WLU)



W	H	D	CODE
20	12	13	MW3012-FT
33	12	13	FW3312-FT
24	12	13	FW3612-FT
30	18	13	MW3018-FT
33	18	13	FW3318-FT
36	18	13	FW3618-FT
30	24	13	MW3024-FT
33	24	13	FW3324-FT
36	24	13	FW3624-FT



Base Cabinet w/ Full Height Door (BF)



W	H	D	CODE
9	30	24	B9-1DO
12	30	24	B12-1DO
15	30	24	B15-1DO
18	30	24	B18-1DO
21	30	24	B21-1DO
24	30	24	B24-1DO

Base Cabinet w/ Two Full Height Door (BF)



W	H	D	CODE
24	30	24	B24-2DO
27	30	24	B27-2DO
30	30	24	B30-2DO
33	30	24	B33-2DO
36	30	24	B36-2DO
39	30	24	B39-2DO
42	30	24	B42-2DO

Base Cabinet w/ One Drawer (B)



W	H	D	CODE
24	30	24	B24-2DO1DR
27	30	24	B27-2DO1DR
30	30	24	B30-2DO1DR
33	30	24	B33-2DO1DR
36	30	24	B36-2DO1DR
39	30	24	B39-2DO1DR
42	30	24	B42-2DO1DR



Base Pot & Pan Cabinet w/ Three Drawers (B3PP)



W	H	D	CODE
9	30	24	B9-21DR
12	30	24	B12-21DR
15	30	24	B15-21DR
18	30	24	B18-21DR
21	30	24	B21-21DR
24	30	24	B24-21DR
27	30	24	B27-21DR
30	30	24	B30-21DR
33	30	24	B33-21DR
36	30	24	B36-21DR
39	30	24	B39-21DR

Base Cabinet w/ Single Waste Bin (BWS)



W	H	D	CODE
18	30	24	BPO18-1D1RO
21	30	24	BPO21-1D1RO
24	30	24	BPO24-1D1RO

Base Cabinet w/ Dual Waste Bin (BWD)



W	H	D	CODE
9	30	24	BPO9-1D2RO
12	30	24	BPO12-1D2RO
15	30	24	BPO15-1D2RO
18	30	24	BPO18-1D2RO
21	30	24	BPO21-1D2RO
24	30	24	BPO24-1D2RO



Sink Base Cabinet
Accessible Sink Base Cabinet (BS / BSH)

- 6" Fixed front
- Partial back eliminates need to cut out
- ADA adaptable version (BSH36) has a removable bottom and toe kick



W	H	D	CODE
30	30	24	SB30-2DO
33	30	24	SB33-2DO
36	30	24	SB36-2DO
39	30	24	SB39-2DO
42	30	24	SB42-2DO

Apron Sink Base (BSA)

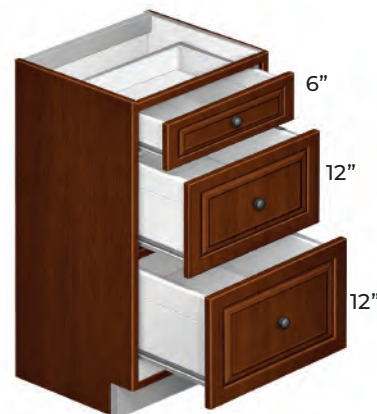
- 12" trimmable apron front can be trimmed to any dimension or fully removed
- Partial back eliminates need to cut out
- Accommodates most apron sinks and
- Professional cook tops



W	H	D	CODE
30	30	24	SB30-2DO1FF
33	30	24	SB33-2DO1FF
36	30	24	SB36-2DO1FF
39	30	24	SB39-2DO1FF
42	30	24	SB42-2DO1FF

Base Cabinet w/ 3 Drawers (B3D)

- All drawers feature standard metallic sides under-mount Soft Close drawer slides



W	H	D	CODE
9	30	24	B9-3DR
12	30	24	B12-3DR
15	30	24	B15-3DR
18	30	24	B18-3DR
21	30	24	B21-3DR
24	30	24	B24-3DR
27	30	24	B27-3DR
30	30	24	B30-3DR
33	30	24	B33-3DR
36	30	24	B36-3DR
39	30	24	B39-3DR



Tall Pantry 24" Deep w/ 2 Doors (T)



W	H	D	CODE
12	80	24	TP1280-1DO1DO
15	80	24	TP1580-1DO1DO
18	80	24	TP1880-1DO1DO
24	80	24	TP2480-1DO1DO
12	86	24	TP1286-1DO1DO
15	86	24	TP1586-1DO1DO
18	86	24	TP1886-1DO1DO
24	86	24	TP2486-1DO1DO
12	95	24	TP1292-1DO1DO
15	95	24	TP1592-1DO1DO
18	95	24	TP1892-1DO1DO
24	95	24	TP2492-1DO1DO

Tall Pantry 24" Deep w/ 4 Doors (T)



W	H	D	CODE
12	80	24	TP1280-1DO1DO
15	80	24	TP1580-1DO1DO
18	80	24	TP1880-1DO1DO
24	80	24	TP2480-1DO1DO
12	86	24	TP1286-1DO1DO
15	86	24	TP1586-1DO1DO
18	86	24	TP1886-1DO1DO
24	86	24	TP2486-1DO1DO
12	92	24	TP1292-1DO1DO
15	92	24	TP1592-1DO1DO
18	92	24	TP1892-1DO1DO
24	92	24	TP2492-1DO1DO

Tall Built-In Refrigerator Panel (TREC)



21"

Tall Panel (AP)



- Upper cabs
- Bottom finish panels
- LED or not LED

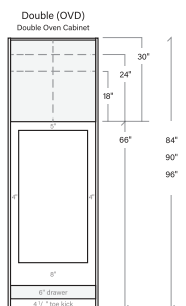


Oven Cabinet - Double (OVD)



- Divider for split ovens included
- Drawer front is 6" tall, interior clearance is 4 1/4"
- 90" and 96" high oven cabinets
- Include one full-depth adjustable shelf in upper section
- Includes plywood oven support panel

WIDTH	MODEL NUMBER		
	84" HIGH	90" HIGH	96" HIGH
33"	OVD3384	OVD3390	OVD3396



CUTOUT WIDTH	
MINIMUM	MAXIMUM
24 7/8"	29 7/8"

CUTOUT HEIGHT	
MINIMUM	MAXIMUM
42 3/4"	52 3/4"

W	H	D	CODE
24	80	24	DO2480-1DR2DO
30	80	24	DO3080-1DR2DO
24	86	24	DO2486-1DR2DO
30	86	24	DO3086-1DR2DO
27	92	24	DO2492-1DR2DO
30	96	24	DO3092-1DR2DO

VANITY CABINETS

Vanity Tall Base Cabinet w/ Two Full Doors (VTF)



21"

W	H	D	CODE
24	28	21	VB2428-2DO
30	30	21	VB3028-2DO
36	30	21	VB3628-2DO

Vanity Tall Base Cabinet w/ Three Drawers (VT3D)



6"

12"

12"

W	H	D	CODE
12	28	21	VB1228-3DR
18	28	21	VB1828-3DR
28	30	21	VB2428-3DR

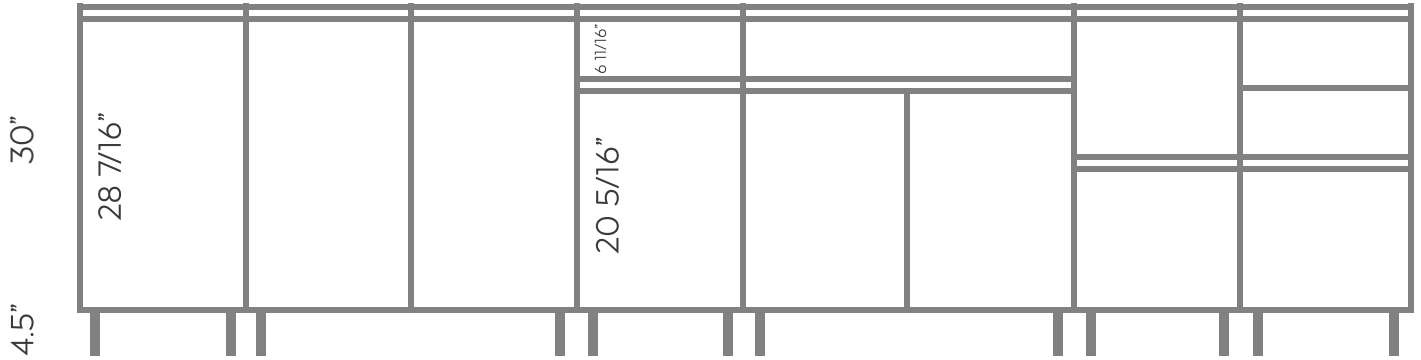


STANDARD CABINETS

Base Gola

GOLA PROFILE NOT INCLUDED

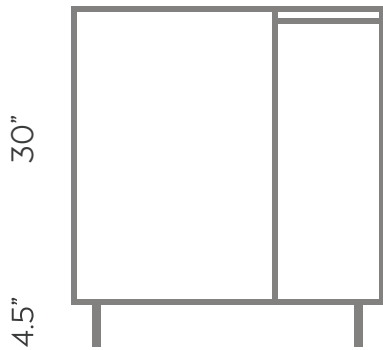
9" / 12" 15" / 18" 21" / 24"	24" / 27" 30" / 33" 36" / 39" / 42"	9" / 12" 15" / 18" 21" / 24"	24" / 27" 30" / 33" 36" / 39"	9" / 12" / 15" / 18" 21" / 24" / 27" / 30" 33" / 36" / 39"
------------------------------------	---	------------------------------------	-------------------------------------	--



EZ Reach / Lazy Susan

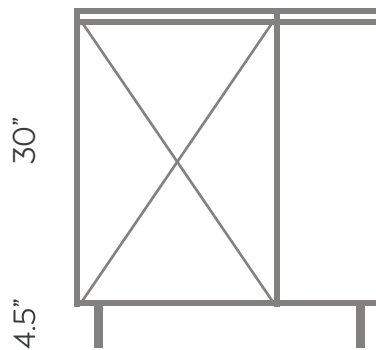
MECHANISM NOT INCLUDED
GOLA PROFILE NOT INCLUDED

33 X 33" / 36 X 36"



Base Blind

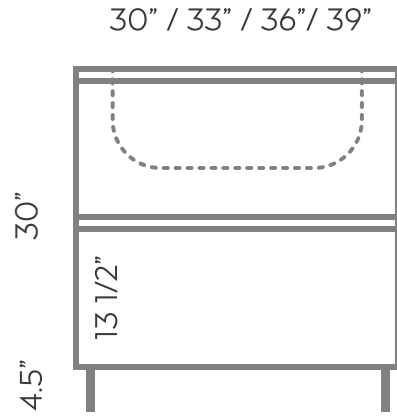
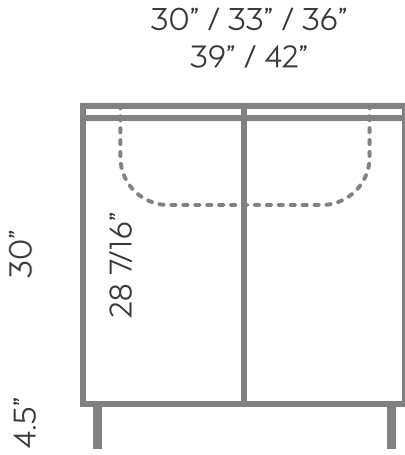
39" / 42" / 45" / 48"





Sink Gola

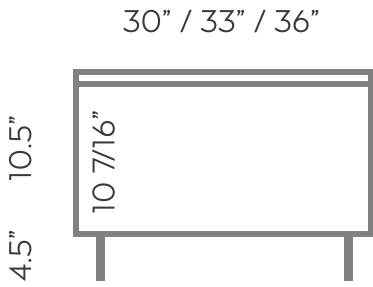
SHELVES NOT INCLUDED
GOLA PROFILE NOT INCLUDED



Special Gola Bases

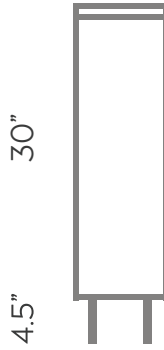
MECHANISM NON INCLUDED
GOLA PROFILE NOT INCLUDED

Single Drawer Base



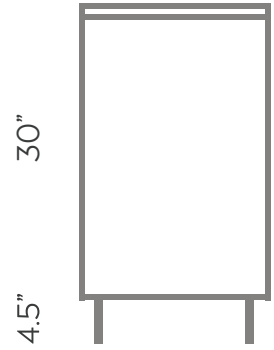
Base Pull-Out

9" / 12" / 15" / 18" / 21" / 24"



Trash Pull-Out

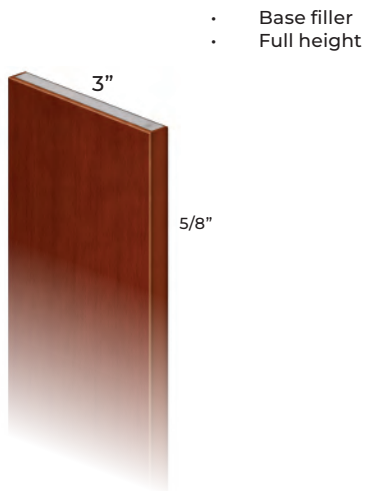
15" / 18" / 21" / 24"





FILLERS

Furniture Board Filler (AF)

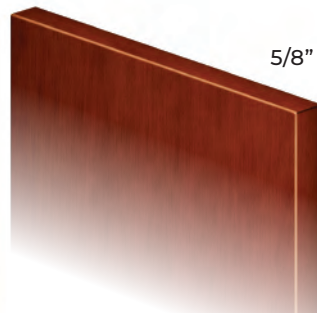


W	H	CODE
6	24	F006024
6	28	F006028
6	30	F006030
6	36	F006036
6	42	F006042
6	79.5	F006080
6	85.5	F006086
6	91.5	F006092
6	96	F006096
6	107	F006107
6	30.75	F006307
6	36.75	F006367
6	42.75	F006427
3	24	F003024

W	H	CODE
3	28	F003028
3	30	F003030
3	36	F003036
3	42	F003042
3	79.5	F003080
3	85.5	F003086
3	91.5	F003092
3	96	F003096
3	107	F003107
3	30.75	F003307
3	36.75	F003367
3	42.75	F003427
23.875	6	F0002386
29.875	6	F0002986

PANELS

Panel Ends (AP)



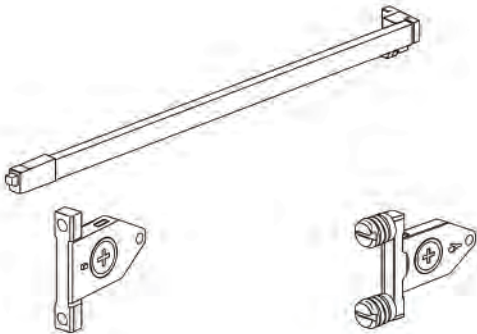
W	H	CODE
14	30	F014030
14	36	F014036
14	42	F014042
14	30.75	F014307
14	36.75	F014367
14	42.75	F014427
22	24	F022024
22	32.5	F022325
25	30	F025030

W	H	CODE
25	34.5	F025345
25	84	F025084
25	90	F025090
25	96	F025096
32	84	F032084
32	90	F032090
32	96	F032096
42	103	F042103



HARDWARE

Full Extension Steel Drawer



Without pre-embedded

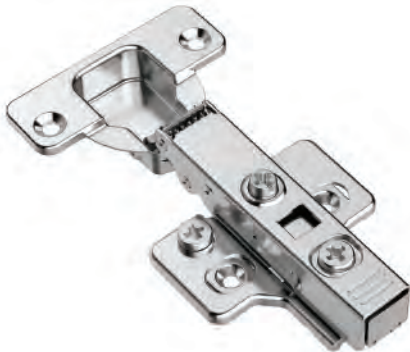
With embedded

MATERIAL	FINISH
COLD-ROLLED STEEL	70% WHITE & SILVER GREY
H	W

89mm

450mm

35mm Cup One Way 3D Soft-Closing Hinge



MATERIAL	DETAILS
COLD-ROLLED STEEL	3D SOFT-CLOSING HINGE (FULL OVERLAY, CLIP, ON)
CUP SIZE	

35mm

Stainless steel handle



MATERIAL	FINISH
SS201	BRUSHED NICKEL
TYPE	

Hollow



ABOUT US

VENDOR INFORMATION

Address: 3360 NW 110th St. Miami, FL 33167

Customer Care Email Address: customerservice@maplehaususa.com

Customer Care Phone Number: (305) 307-1770

Customer Care Service Hours: Monday through Friday – 8:00am to 5:00pm (EST)

WEBSITE

Visit the Maple Haus USA website at www.maplehaususa.com for more product information and ideas.

MINIMUM ORDER

A five cabinet minimum applies to all Maple Haus USA orders; accessories are not included in the five cabinet minimum.

ORDER PROCESSING AND LEAD-TIME

Special Order Hampton Bay Designer Series cabinet orders ship in two weeks. Some orders and store locations, including those outside the Continental U.S., may require more delivery time.

- Orders must be submitted via EDI.
- Orders received before 3:00 pm (EST) Mon–Fri will be accepted on the same business day.
- Orders received after 3:00 pm (EST) Mon–Fri will be accepted on the next business day.
- Orders received on Saturday or Sunday will be accepted on the next business day.

RTV PROCEDURES

For any questions, please contact Customer Care at (305) 307-1770.

- If product was mis-shipped or an order entry error occurred, contact Customer Care for disposition.

DAMAGE AND SHORTAGE

- Reorder products or parts for consumer without delay. Replacements will be expedited as quickly as possible.
- If damage occurred during transit, request the store's receiving department to file a freight claim.
- All shortages must be reported to carrier within 30 days.

MANUFACTURING OR PRODUCT DEFECT

- If the product has a manufacturing product defect, process RTV for credit.

CANCELLATIONS OR CUSTOMER RETURN REQUESTS CANCELLATIONS OR CHANGES TO ORDERS ARE NOT ALLOWED AFTER 48 HOURS FROM RECEIPT OF THE STORE PURCHASE ORDER.

TERMS & CONDITIONS

All purchases, specifications, warranties, and services are subject to our full Terms & Conditions. Please scan the QR code or [visit this link](#) to review the complete policy on our website.





NW SHOWROOM

3360 NW 110TH STREET. MIAMI, FL 33167
305-307-1770

NW SHOWROOM

200 W 24TH STREET. HIALEAH, FL 33010
305-307-1770 ext. 1008



CUSTOMERSERVICE@MAPLEHAUSUSA.COM
WWW.MAPLEHAUSUSA.COM

